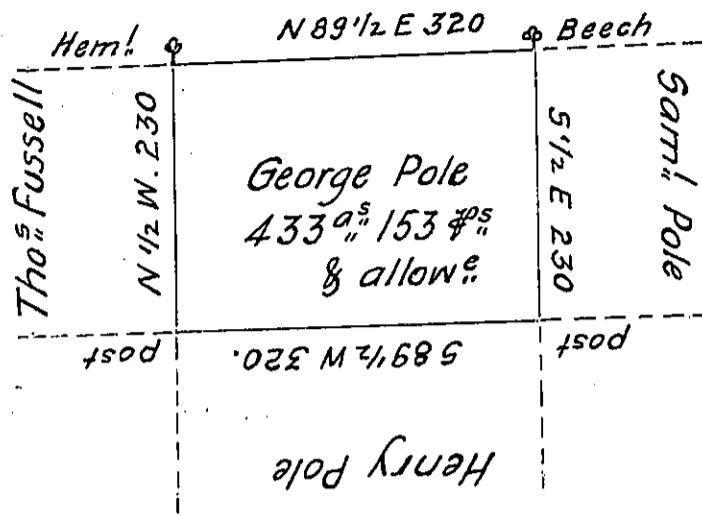


Henry Polk

C-159-105



C-173-268

C-173-282

A Draught of a tract of land called \_\_\_\_\_ Situate in the County of Luzerne, Adjoining Thomas Fussell & others surveyed the 16<sup>th</sup> day of Novem<sup>r</sup>. 1792 for George Pole in pursuance of a warrant bearing date the 3<sup>d</sup> day of April 1792. Containing Four hundred thirty three Acres & one hundred & fifty three perches & the usual allowance of six <sup>th</sup> Cent for roads &c.

To Dan<sup>l</sup>. Brodhead Esq<sup>r</sup>. } Anty. Crothers D.S.  
 Surveyor General. }

IN TESTIMONY that the above is a copy of the original remaining on file in the Department of Internal Affairs of Pennsylvania, made conformably to an Act of Assembly approved the 16th day of February, 1833, I have hereunto set my Hand and caused the Seal of said Department to be affixed at Harrisburg, this twentyfirst day of June 1906

*James B. Brown*  
 Secretary of Internal Affairs.